

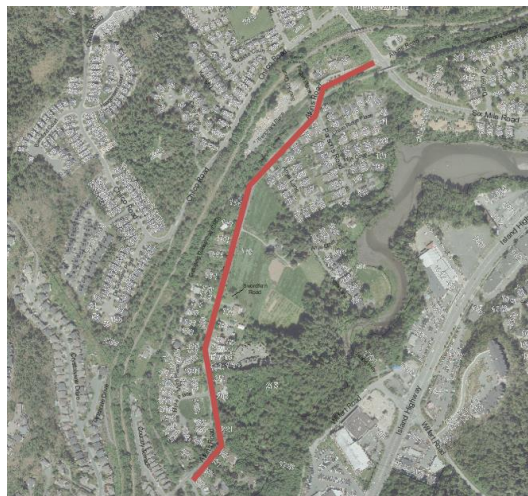


TOWN OF VIEW ROYAL
Engineering Department
45 View Royal Avenue
Victoria, BC V9B 1A6
Phone: (250) 479-6800 Fax: (250) 727-9551
Email: engineering@viewroyal.ca
Website: www.viewroyal.ca

TRAFFIC ADVISORY

WEDNESDAY, JULY 31ST

Atkins Road



Please be advised that BC Hydro's contractor will be performing tree maintenance on Atkins Road between Six Mile Road and the municipal border.

Traffic control will be onsite to direct traffic from 9am to 3pm. Lane closures with alternating traffic will be in effect at various times during these hours.

Emergency vehicles will be treated with utmost priority and will have immediate access as required. Traffic control persons will be situated in the work zone to assist pedestrians and cyclists.

We ask that you lower your speed and use caution when travelling through the work zone.