



TOWN OF VIEW ROYAL
Engineering Department
45 View Royal Avenue
Victoria, BC V9B 1A6
Phone: (250) 479-6800
Email: engineering@viewroyal.ca
Website: www.viewroyal.ca

TRAFFIC ADVISORY

September 17-20, 2024
9:00am to 3:00pm

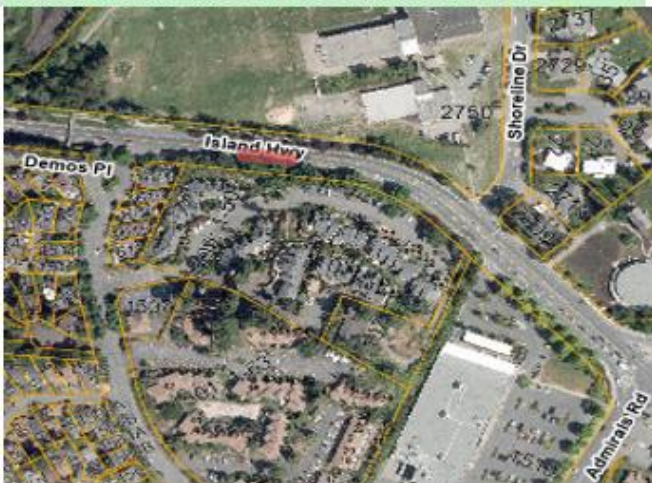
MULTIPLE LOCATIONS ON ISLAND HWY

Please be advised that BC Hydro will be accessing their manholes along Island Hwy between the hours of 9am and 3pm from **Tuesday, September 17th to Friday, September 20th, 2024.**

During this time, BC Hydro would move from location to location, and each location should take approximately 2-3 hours. Traffic control persons will be situated in the work zone to assist motorists, pedestrians, and cyclists.

Emergency vehicles will be treated with utmost priority and will have immediate access as required. We ask that you lower your speed and use caution when travelling through the work zone.

ISLAND HWY WEST OF SHORELINE DR



333 ISLAND HWY



298 ISLAND HWY



160 ISLAND HWY

