

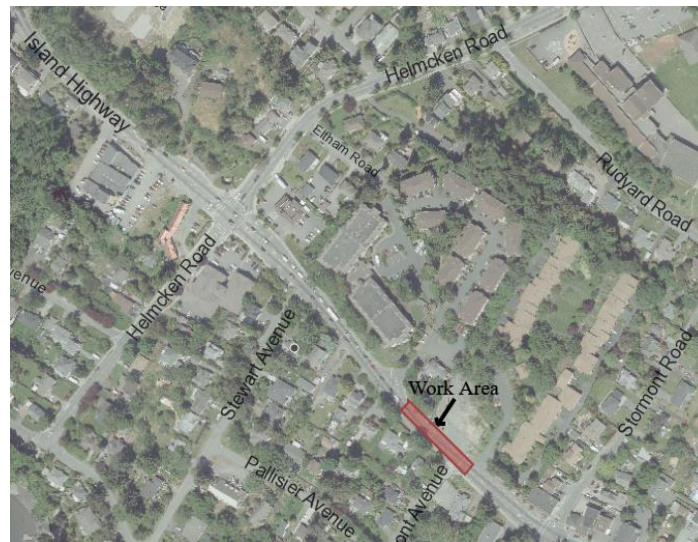


TOWN OF VIEW ROYAL
Engineering Department
45 View Royal Avenue
Victoria, BC V9B 1A6
Phone: (250) 479-6800 Fax: (250) 727-9551
Email: engineering@viewroyal.ca
Website: www.viewroyal.ca

TRAFFIC ADVISORY - REVISED

THURSDAY, APRIL 4th - FRIDAY, JUNE 14th

280 ISLAND HIGHWAY (between Helmcken Rd & Stormont Rd)



Please be advised that from Thursday, April 4th to Friday, June 14th, the Developer of 280 Island Highway will be carrying out road works on Island Highway between the hours of 9am – 3pm. Lane closures with alternating traffic will be in effect. **Expect delays.**

Emergency vehicles will be treated with utmost priority and will have immediate access as required. Traffic Control Persons will be situated in the work zone to assist pedestrians and cyclists.

We ask that you lower your speed and use caution when travelling through the work zone. The use of an alternate route is recommended.