



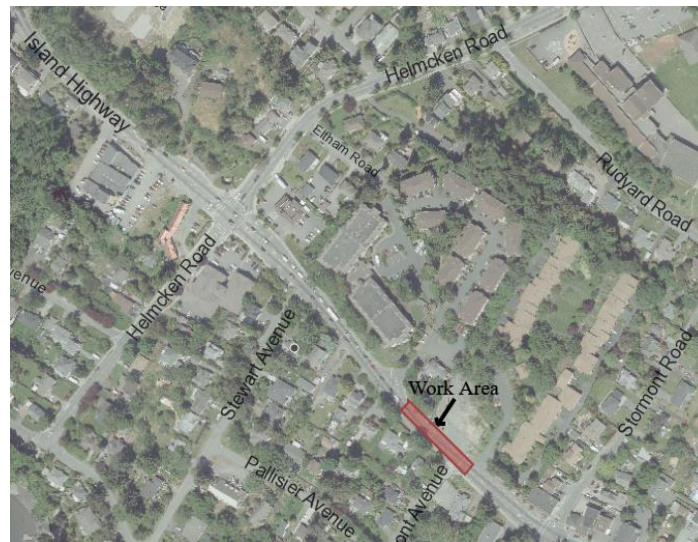
**TOWN OF VIEW ROYAL**  
Engineering Department  
45 View Royal Avenue  
Victoria, BC V9B 1A6  
Phone: (250) 479-6800 Fax: (250) 727-9551  
Email: [engineering@viewroyal.ca](mailto:engineering@viewroyal.ca)  
Website: [www.viewroyal.ca](http://www.viewroyal.ca)

---

# TRAFFIC ADVISORY - REVISED

THURSDAY, AUGUST 1 - FRIDAY, AUGUST 16<sup>th</sup>

## 280 ISLAND HIGHWAY (between Helmcken Rd & Stormont Rd)



Please be advised that from Thursday, August 1st to Friday, August 16th, the Developer of 280 Island Highway will be carrying out road works on Island Highway between the hours of 9am – 3pm. Lane closures with alternating traffic may be in effect. **Expect minor delays.**

Emergency vehicles will be treated with utmost priority and will have immediate access as required. Traffic Control Persons will be situated in the work zone to assist pedestrians and cyclists.

We ask that you lower your speed and use caution when travelling through the work zone. The use of an alternate route is recommended.